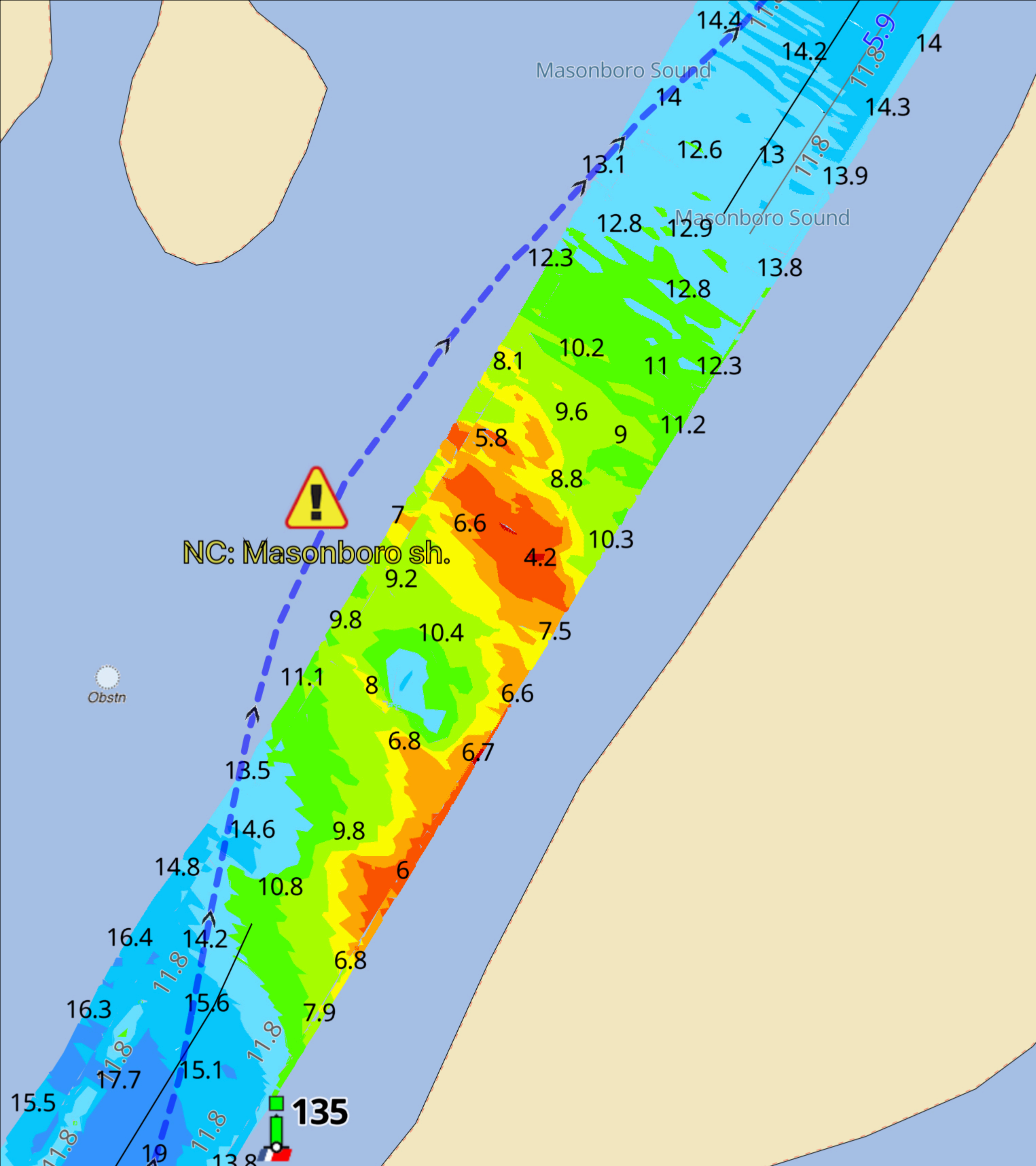


# Bob423 Tracks

## How to download and use in Aqua Map and Navionics



Bob423 9/14/2022



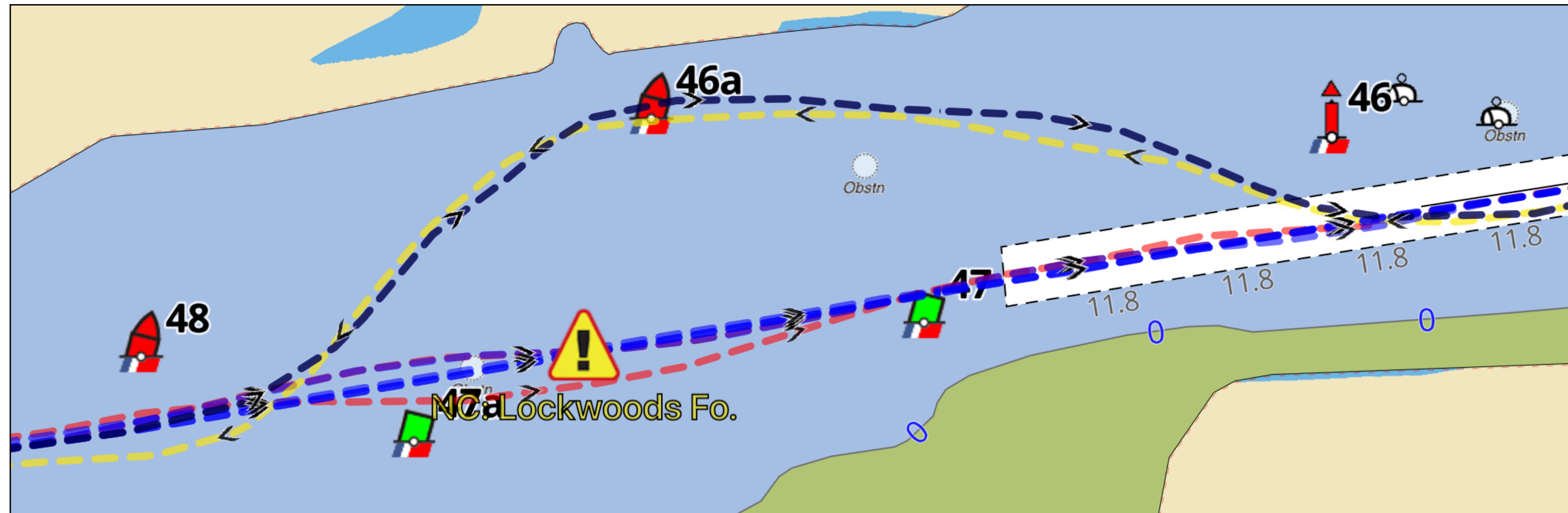
# What are Bob423 Tracks?

- **GPX files containing tracks, routes, or markers.**
- **They can be shared between any recent (last 10 years) navigation app or program**
- **Four tracks have been developed by Bob423 for the Atlantic ICW that follow the deepest water**

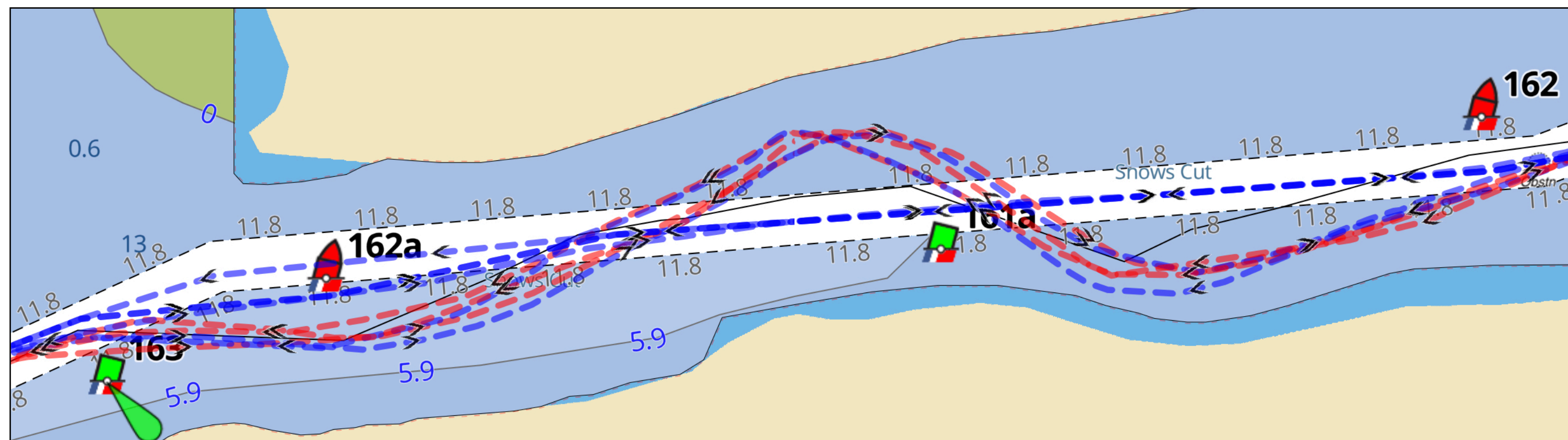
# What's the source data?

- **Verified tracks based on 24 passages from Norfolk to Key West with depth data converted to MLLW**
- **USACE surveys for rapidly shoaling areas**
- **Dredging contracts detailing the width, depth, and path of dredging**
- **Bob423 Surveyors tracks**
- **Navionics SonarChart often used for stable areas**

# Verified tracks based on 24 passages from Norfolk to Key West with depth data converted to MLLW

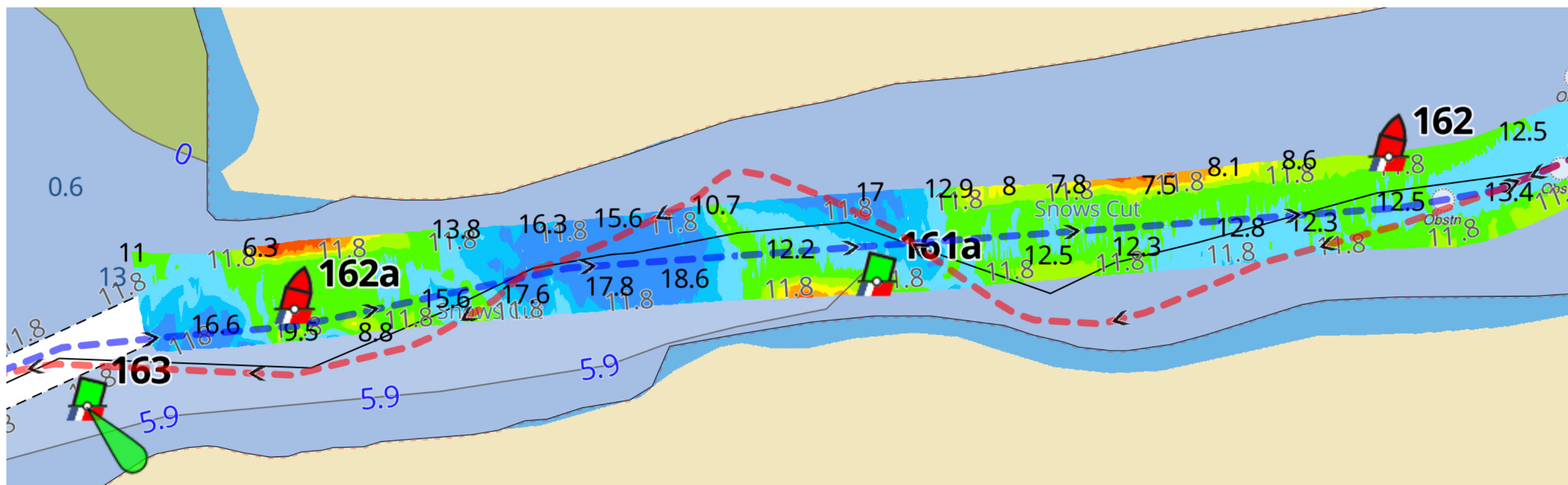
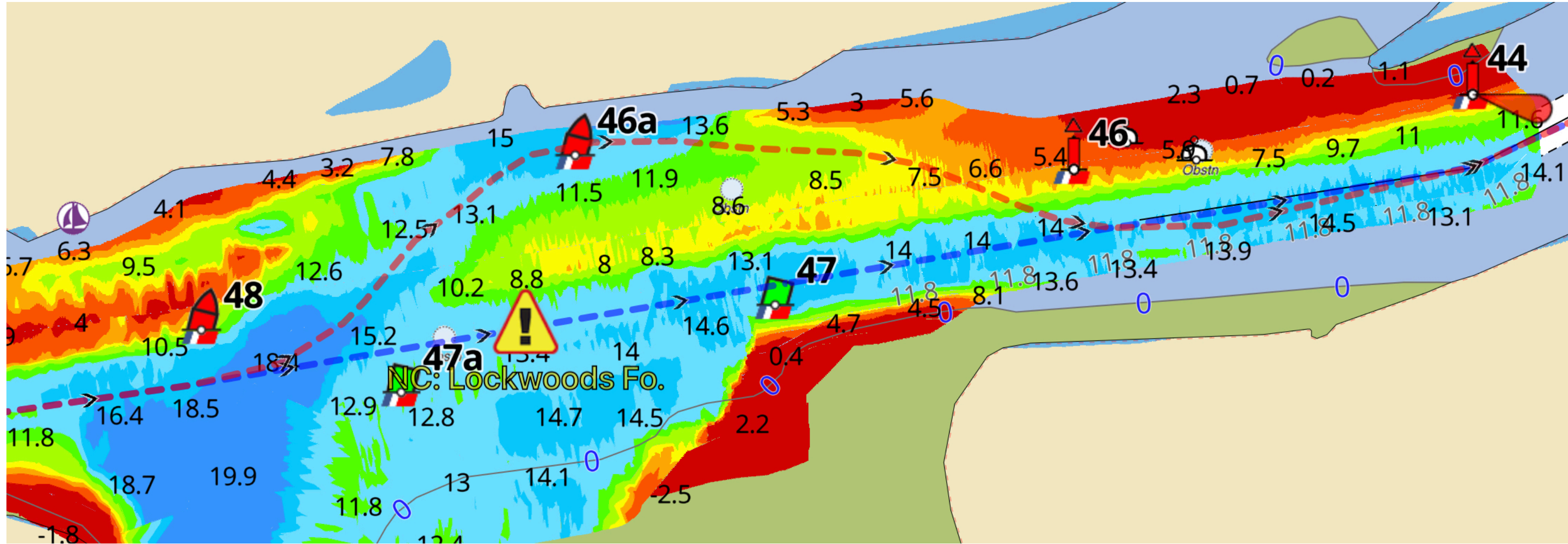


**Lockwoods Folly has had two basic routes: straight after dredging and shore over the years.**



**Snows Cut is either straight after dredging or a slalom run.**

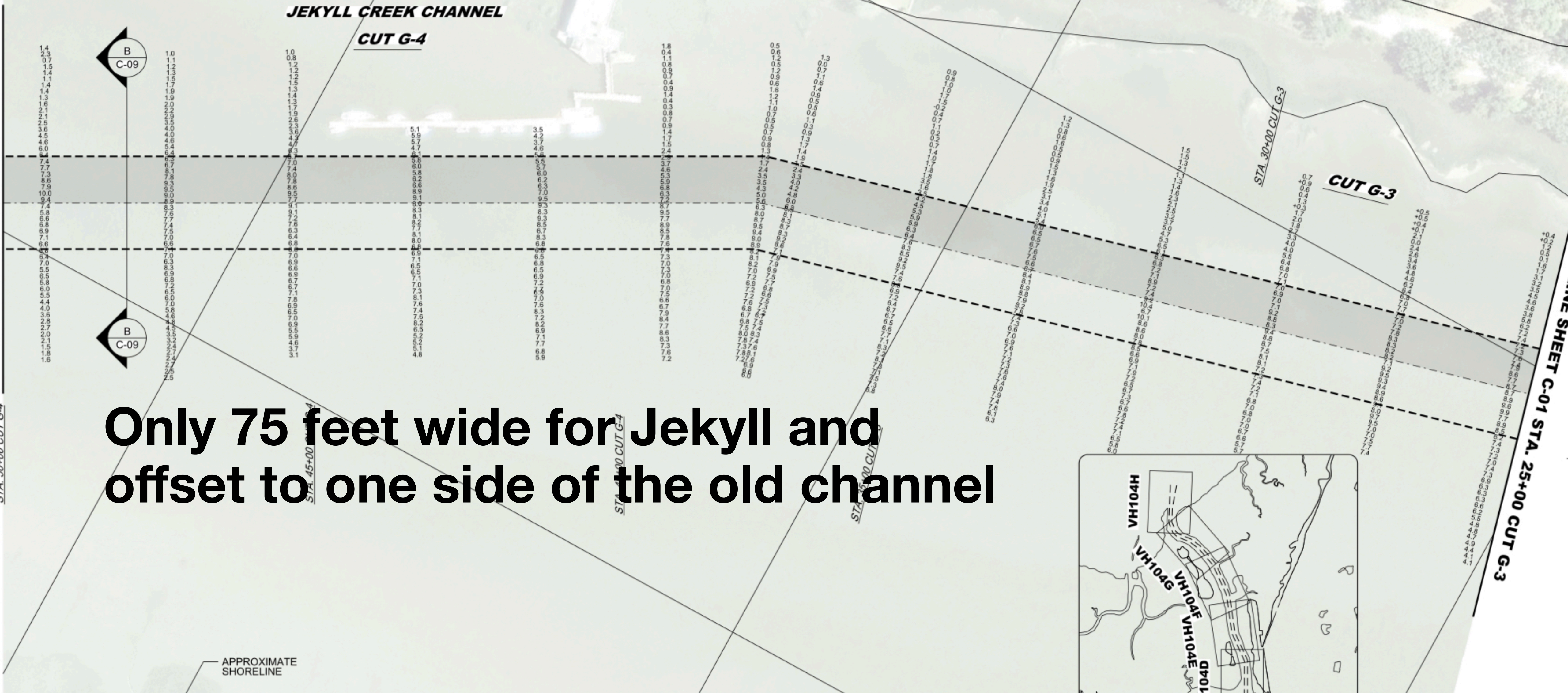
# US Army Corps of Engineers (USACE) surveys



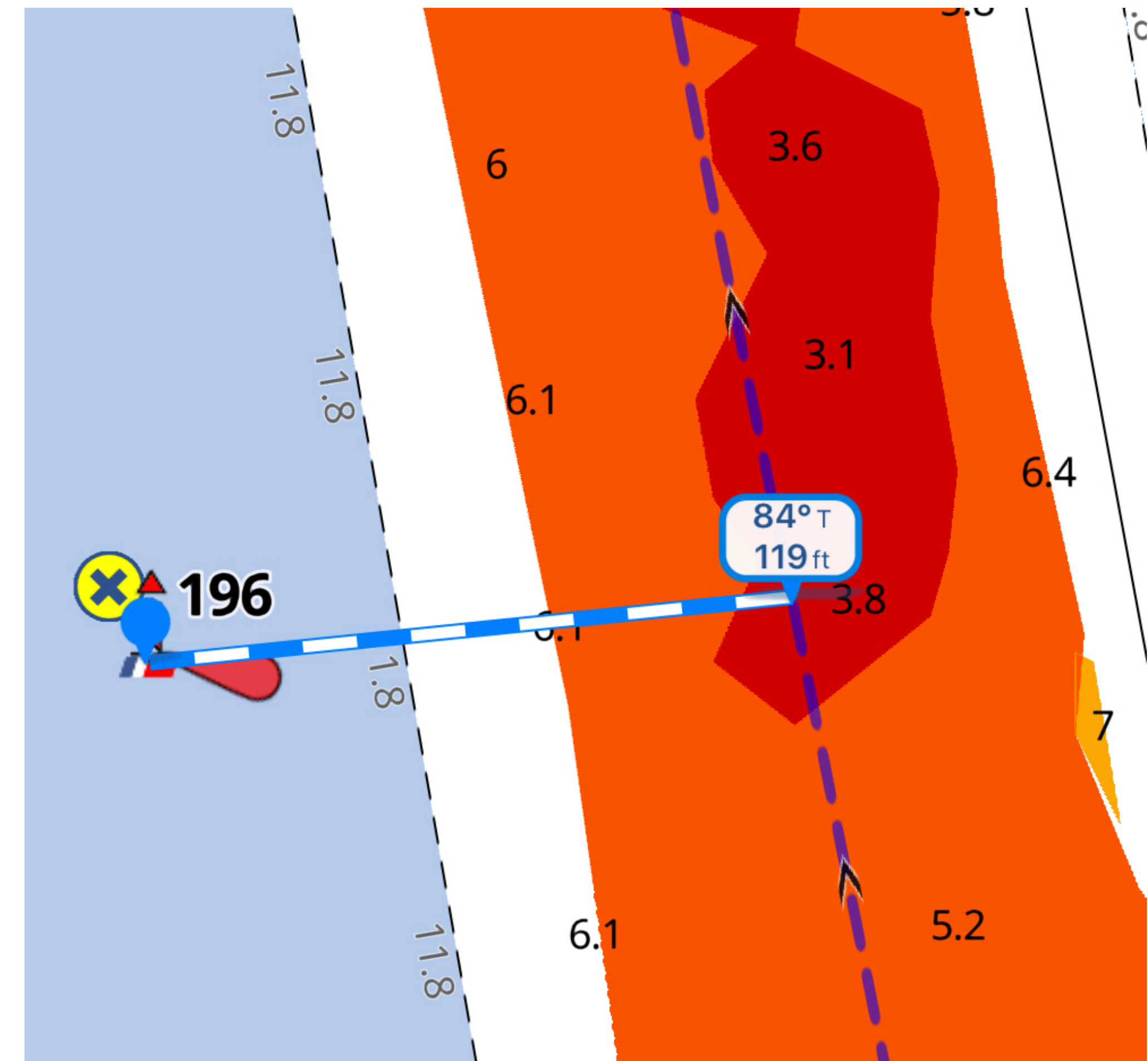
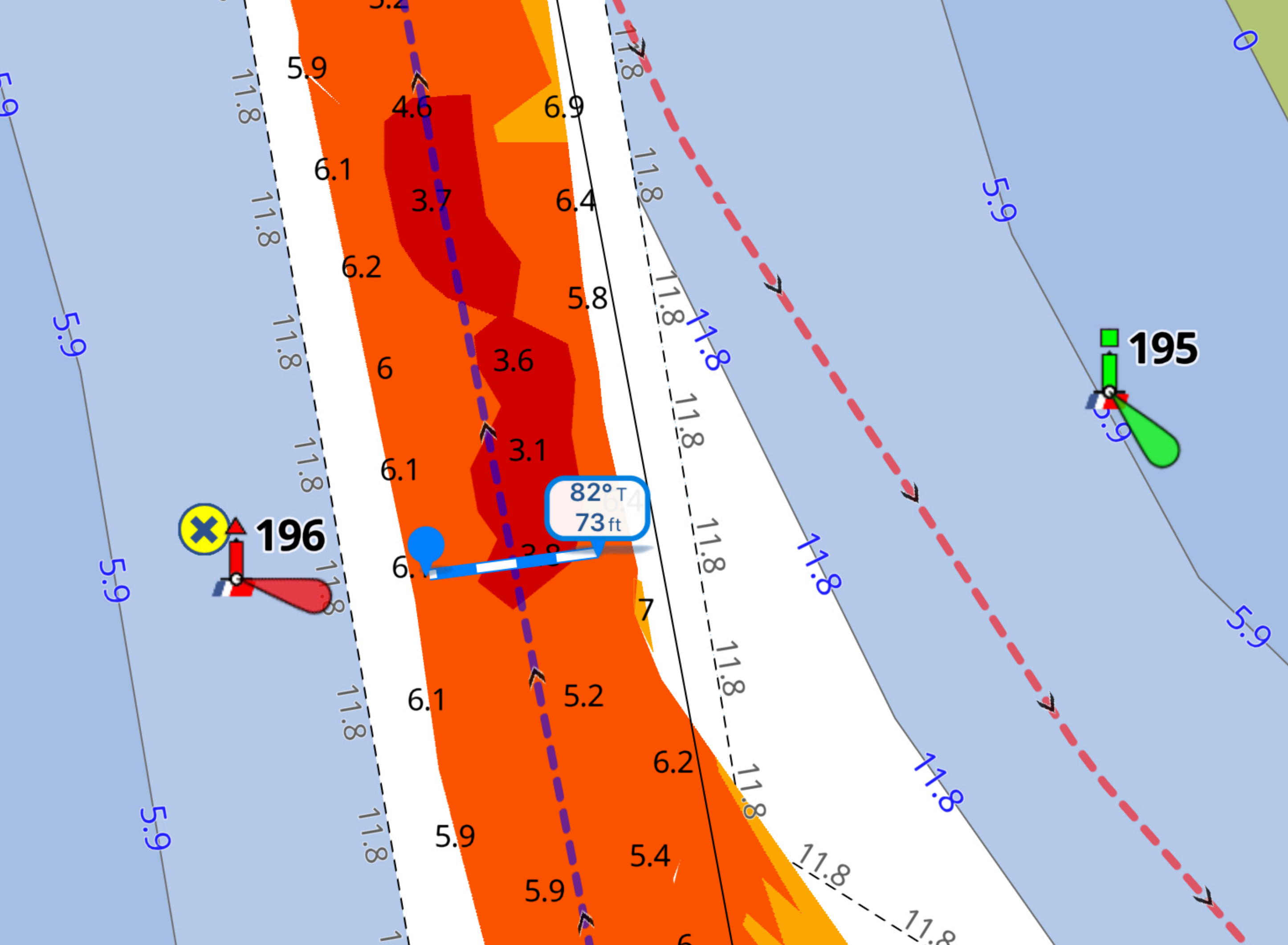
**When a new USACE survey is completed, I adjust the Bob423 track to follow the newly dredged channel as verified by the survey.**

10-FOOT REQUIRED DEPTH  
PLUS 2-FOOT ALLOWABLE OVERDEPTH

# USACE dredging contracts detail the dredging path

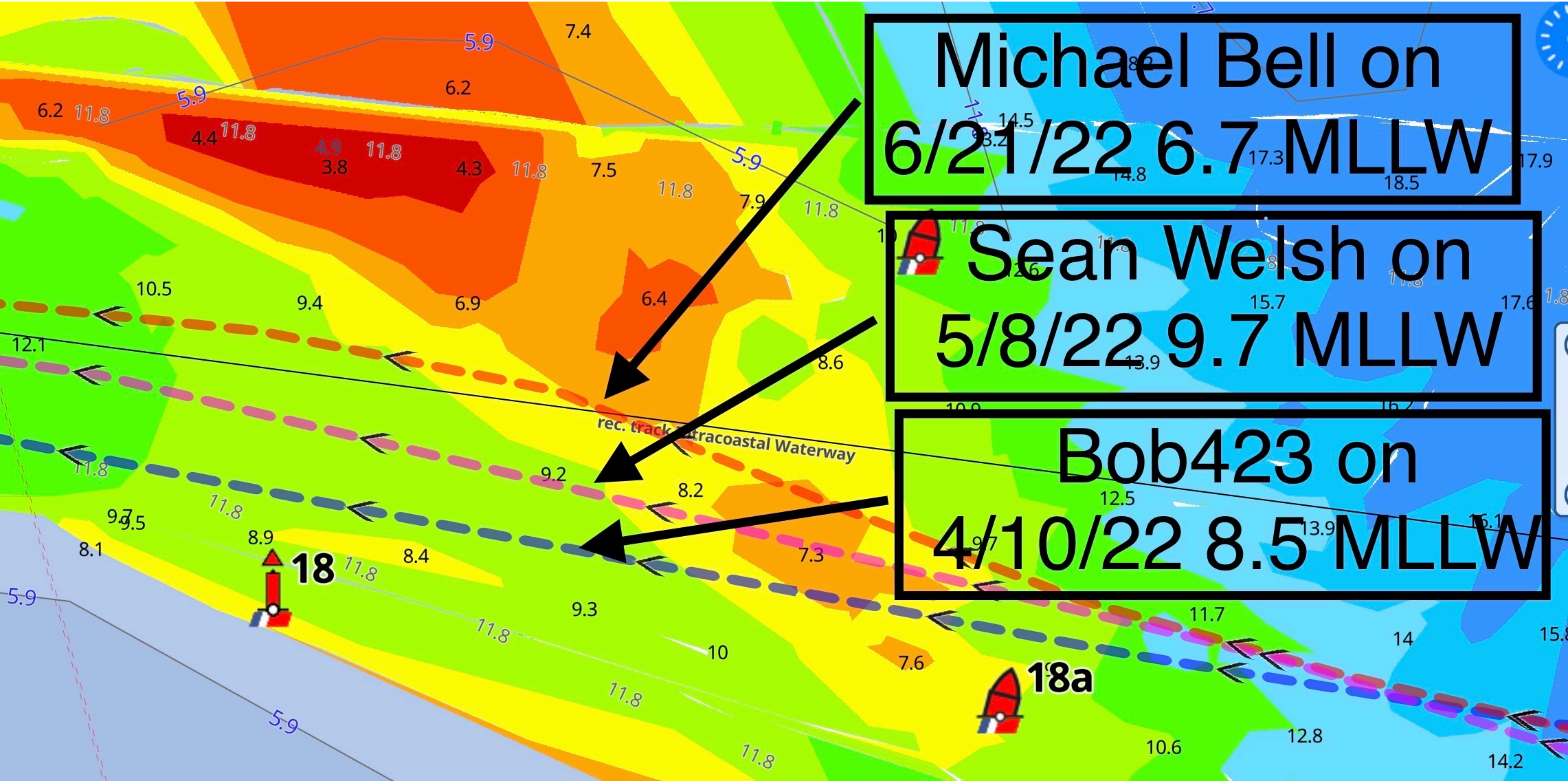


Only 75 feet wide for Jekyll and offset to one side of the old channel



- **The approach to Little Mud River. The blue dotted line is the Bob423 track down the centerline of the dredged channel, 75 ft wide.**
- **The red dotted line was the best water before dredging**

# Bob423 Surveyors



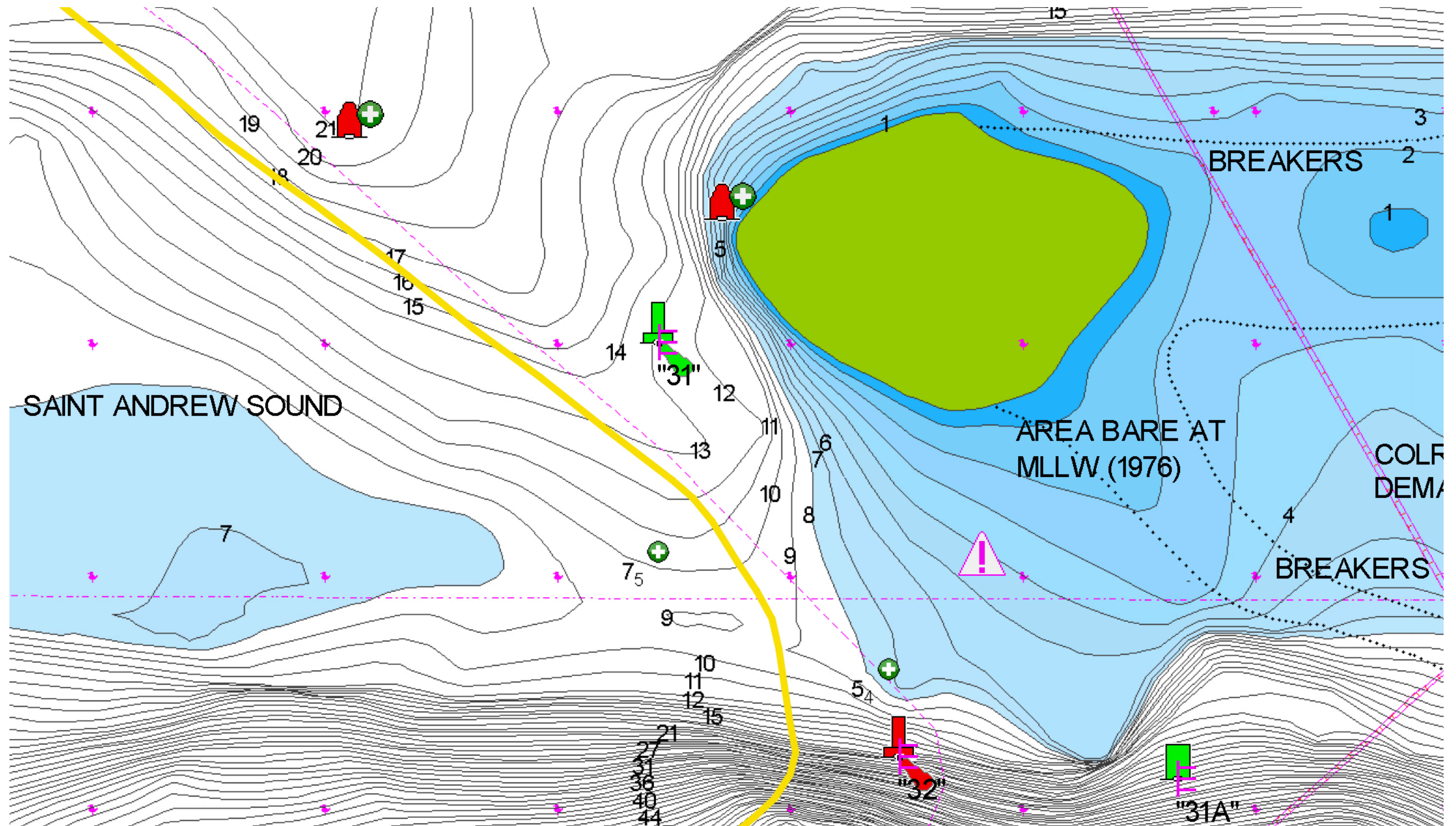
Michael Bell on  
6/21/22 6.7 MLLW

Sean Welsh on  
5/8/22 9.7 MLLW

Bob423 on  
4/10/22 8.5 MLLW



# Navionics SonarChart



# Source Data Summary

- **Data from all these sources are then evaluated for how they affect the Bob423 tracks.**
- **Adjustments will be made if warranted and a new track issued with a new date**
- **Check each day before leaving harbor.**
- **The latest tracks are always available on the download site at <http://bobicw.blogspot.com/>**
- **Chrome browser works best, will be used in examples**

# Bob423 ICW Tracks and Routes

Home	2021 ICW Cruising Guide Links	2022 ICW Cruising Guide Hyperlinks	How to Download Tracks and Routes		
Waterway Guide Alerts (hazards) List	GPX Routes	How to Record and Share Tracks	<b>Bob423 Long Tracks</b>	Track Splitter	Videos
Wine	Burgees	Spiral Bound Guide	USACE Requested Surveys		

Monday, August 13, 2018

## GEC Account

Welcome bob423

A screenshot of the AquaMap software interface. The top bar contains icons for download, map, and a search function. Below the bar is a list of files and folders. A folder named "2018 Hampton to NY" is visible, with a checkbox next to it.



# Bob423 ICW Tracks and Routes

Home	2021 ICW Cruising Guide Links	2022 ICW Cruising Guide Hyperlinks	How to Download Tracks and Routes
Waterway Guide Alerts (hazards) List	GPX Routes	How to Record and Share Tracks	<b>Bob423 Long Tracks</b>
Wine	Burgees	Spiral Bound Guide	USACE Requested Surveys

## Bob423 Long Tracks

**UPDATED on 8/14/2022. Edited Bob423 Norfolk to Southport to avoid shoaling at Snows Cut. New track gives 8 MLLW on Bob 423 track.**

I've also included a package of 18 side trips that start adjacent to the blue-dotted Bob423 ICW track and show the way to marinas and anchorages that I use. The side trip tracks are in red to avoid confusion with the blue Bob423 ICW Track. All GPX files have been tested to load properly and display with Aqua Map and Navionics. Garmin Active Captain will load the files but won't display the entire length sometimes, use Track Splitter to cut them into smaller segments for Garmin products.

**2 - Norfolk, VA to Southport, NC** updated to include all October Inlet, New River approach at G65A, New River, Topsail inlet (seve

[B423 Norfolk to Southport 032722](#)

**3 - Southport, NC to Savannah, GA** Blackwoods Folly dredging

[B423 Southport to Savannah 041322](#)

**4 - Savannah, GA to Titusville, FL** updated to use the newly dre  
Fernandina for 9.5 MLLW as well as many other changes to avoid

[B423 Savannah to Titusville 042522](#)

**5 - Titusville, FL to Ft Lauderdale, FL**

[B423 Titusville to Ft Lauderdale 032722](#)

**6 - All 18 side trips** for safe passage into Homer Smith Marina in  
Anchorage, NC, Pungo River Anchorage, NC, Ft Matanzas Ancho  
ICW Track.

[Bob423 All Side Tracks](#)

- **Shown are the four Atlantic ICW GPX files for tracks from Norfolk to Ft Lauderdale**
- **The last six numbers is the time stamp**
- **032722 equals 03/27/2022**
- **Always use the latest track**
- **There are side trips in red which load as a package**

1 - A package of four GPX files for the ICW covering from Norfolk, VA to Ft Lauderdale, FL. **This file is currently not available due to updates to indi Tracks.**

**2 - Norfolk, VA to Southport, NC** updated to include all October 2020 daily tracks from Norfolk to Southport. Many changes are included to avoid shoal Inlet, New River approach at G65A, New River, Topsail inlet (several places), Snows Cut, channel to Cape Fear River, and additional minor changes.

[B423 Norfolk to Southport 081422](#)

**Tap on a track to download**

**3 - Southport, NC to Savannah, GA** - Lockwoods Folly dredging has been completed. The updated track goes straight through.

[B423 Southport to Savannah 051022](#)

**4 - Savannah, GA to Titusville, FL** updated to use the newly dredged channel through parts of Mud River and Altamaha Sound, Jekyll Island for 6.3 M Fernandina for 9.5 MLLW as well as many other changes to avoid minor shoaling.

[B423 Savannah to Titusville 042522](#)

**5 - Titusville, FL to Ft Lauderdale, FL**

[B423 Titusville to Ft Lauderdale 032722](#)

**6 - All 18 side trips** for safe passage into Homer Smith Marina in Beaufort, NC, Jekyll Island Anchorage, Bethune Anchorage in Daytona, FL, Cedar Creek Anchorage, NC, Pungo River Anchorage, NC, Ft Matanzas Anchorage in FL, and many others. All side trip tracks are in red and start near the blue dotted ICW Track.

[Bob423 All Side Tracks](#)

**7 - Ft Lauderdale to Key West Tracks**

**Miami to Tavernier (Blue Waters Marina)**

8.8 MLLW in Biscayne Channel

4.9 MLLW over bar on approach to Blue Waters Marina in Tavernier, use tide. Do not stray from track on approach to Tavernier, I did once and grounded corner on approach). Much deeper once over bar.

[T\\_1\\_20\\_20v2](#)



B423 Norfolk to Southport 081422.gpx

Download



**Before following Bob 423 tracks, please see link:** [Rules of the Road](#)

1 - A package of four GPX files for the ICW covering from Norfolk, VA to Ft Lauderdale, FL. **This file is currently not available due to updates to individual Long Tracks.**

**2 - Norfolk, VA to Southport, NC** updated to include all October 2020 daily tracks from Norfolk to Southport. Many changes are included to avoid shoaling: Browns Inlet, New River approach at G65A, New River, Topsail inlet (several places), Snows Cut, channel to Cape Fear River, and additional minor changes.

[B423 Norfolk to Southport 081422](#)

**3 - Southport, NC to Savannah, GA** - Lockwoods Folly dredging has been completed. The updated track goes straight through.

[B423 Southport to Savannah 051022](#)

**4 - Savannah, GA to Titusville, FL** updated to use the newly dredged channel through parts of Mud River and Altamaha Sound, Jekyll Island for 6.3 MLLW, and Fernandina for 9.5 MLLW as well as many other changes to avoid minor shoaling.

[B423 Savannah to Titusville 042522](#)

**5 - Titusville, FL to Ft Lauderdale, FL**

[B423 Titusville to Ft Lauderdale 032722](#)

**6 - All 18 side trips** for safe passage into Homer Smith Marina in Beaufort, NC, Jekyll Island Anchorage, Bethune Anchorage in Daytona, FL, Cedar Creek Anchorage, NC, Pungo River Anchorage, NC, Ft Matanzas Anchorage in FL, and many others. All side trip tracks are in red and start near the blue dotted Bob423 ICW Track.

[Bob423 All Side Tracks](#)

**7 - Ft Lauderdale to Key West Tracks**

**Miami to Tavernier (Blue Waters Marina)**

8.8 MLLW in Biscayne Channel

4.9 MLLW over bar on approach to Blue Waters Marina in Tavernier, use tide. Do not stray from track on approach to Tavernier, I did once and grounded (do not cut corner on approach). Much deeper once over bar.

[T\\_1\\_20\\_20v2](#)

 B423 Norfolk to Southport 081422.gpx

[Open in...](#) 

**Changes to “Open in”  
then tap**

Before following Bob 423 tracks, please see link: [Rules of the Road](#)

1 - A package of four GPX files for the ICW covering from Norfolk, VA to Ft Lauderdale, FL. **This file is currently not available due to updates to individual Long Tracks.**

2 - **Norfolk, VA to Southport, NC** updated to include all October 2020 daily tracks from Norfolk to Southport, VA Inlet, New River approach at G65A, New River, Topsail inlet (several places), Snows Cut, channel to [B423 Norfolk to Southport 081422](#)

3 - **Southport, NC to Savannah, GA** - Lockwoods Folly dredging has been completed. The updated [B423 Southport to Savannah 051022](#)

4 - **Savannah, GA to Titusville, FL** updated to use the newly dredged channel through parts of Mud and Fernandina for 9.5 MLLW as well as many other changes to avoid minor shoaling. [B423 Savannah to Titusville 042522](#)

5 - **Titusville, FL to Ft Lauderdale, FL**  
[B423 Titusville to Ft Lauderdale 032722](#)

6 - **All 18 side trips** for safe passage into Homer Smith Marina in Beaufort, NC, Jekyll Island Anchorages, NC, Pungo River Anchorage, NC, Ft Matanzas Anchorage in FL, and many others. All side trips are included in the [Bob423 All Side Tracks](#) ICW Track.

7 - **Ft Lauderdale to Key West Tracks**

**Miami to Tavernier (Blue Waters Marina)**

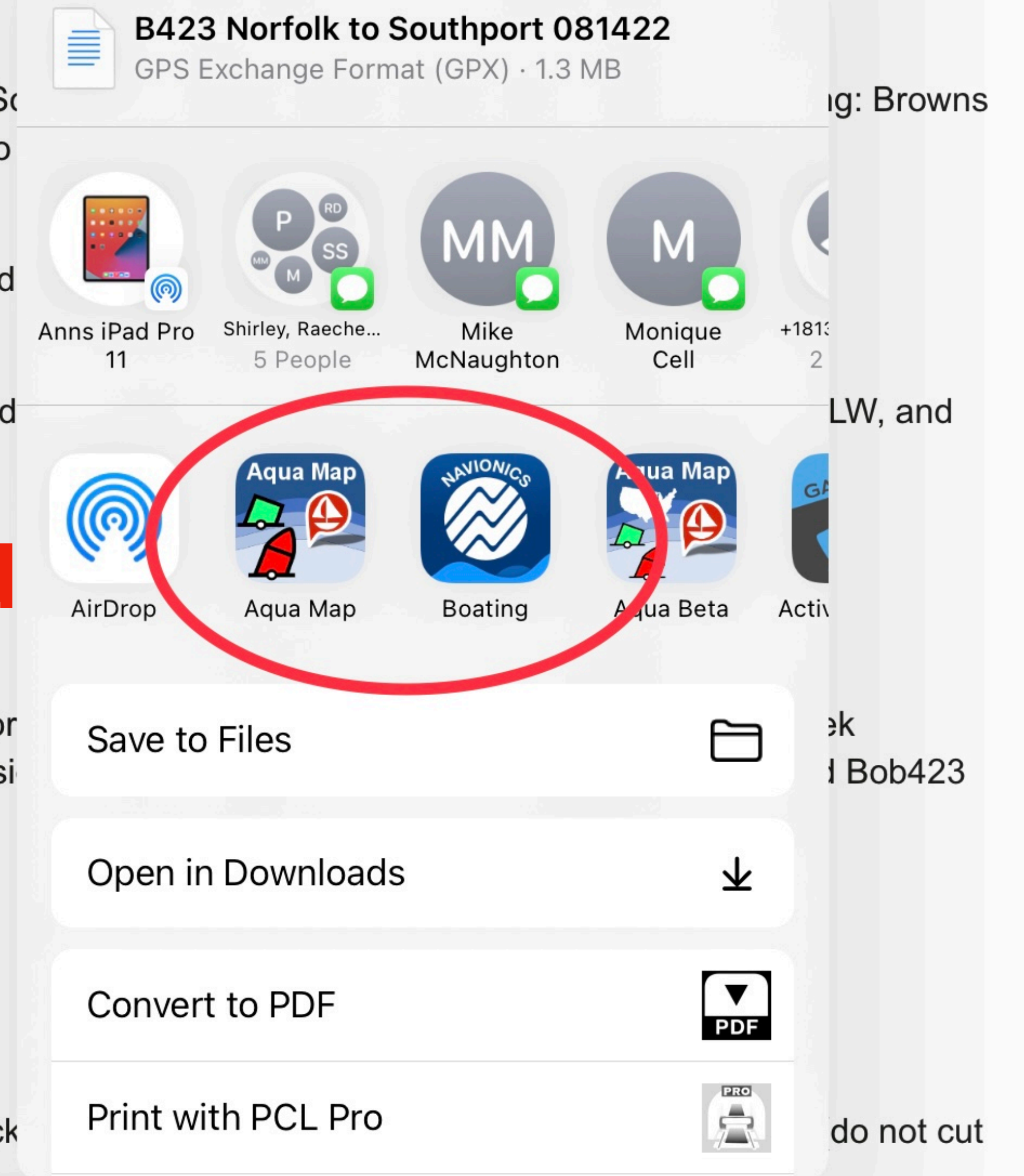
8.8 MLLW in Biscayne Channel

4.9 MLLW over bar on approach to Blue Waters Marina in Tavernier, use tide. Do not stray from track (use 4.9 MLLW corner on approach). Much deeper once over bar.

[T\\_1\\_20\\_20v2](#)

 B423 Norfolk to Southport 081422.gpx

**Tap on app to load**



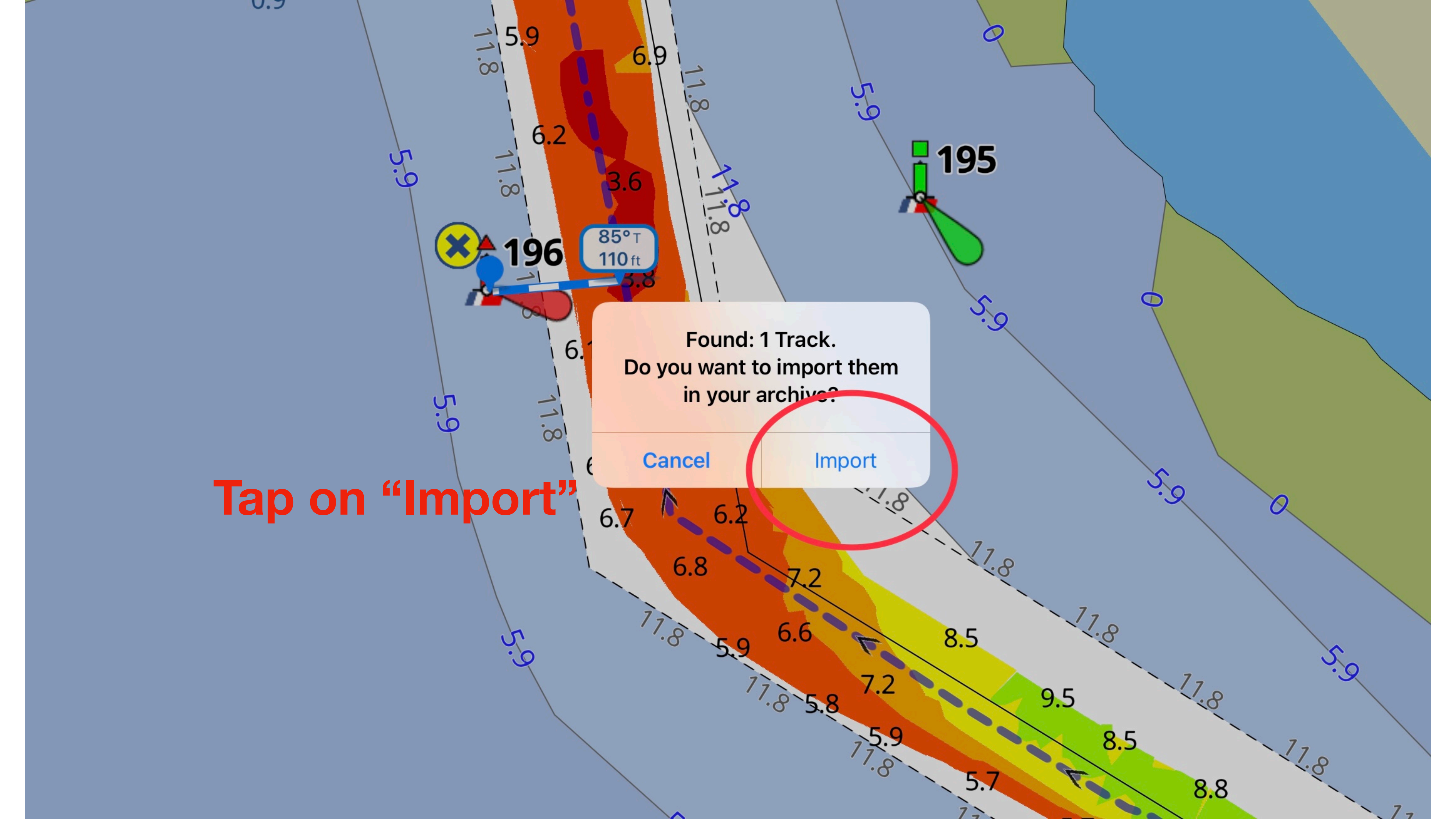
Open in... 

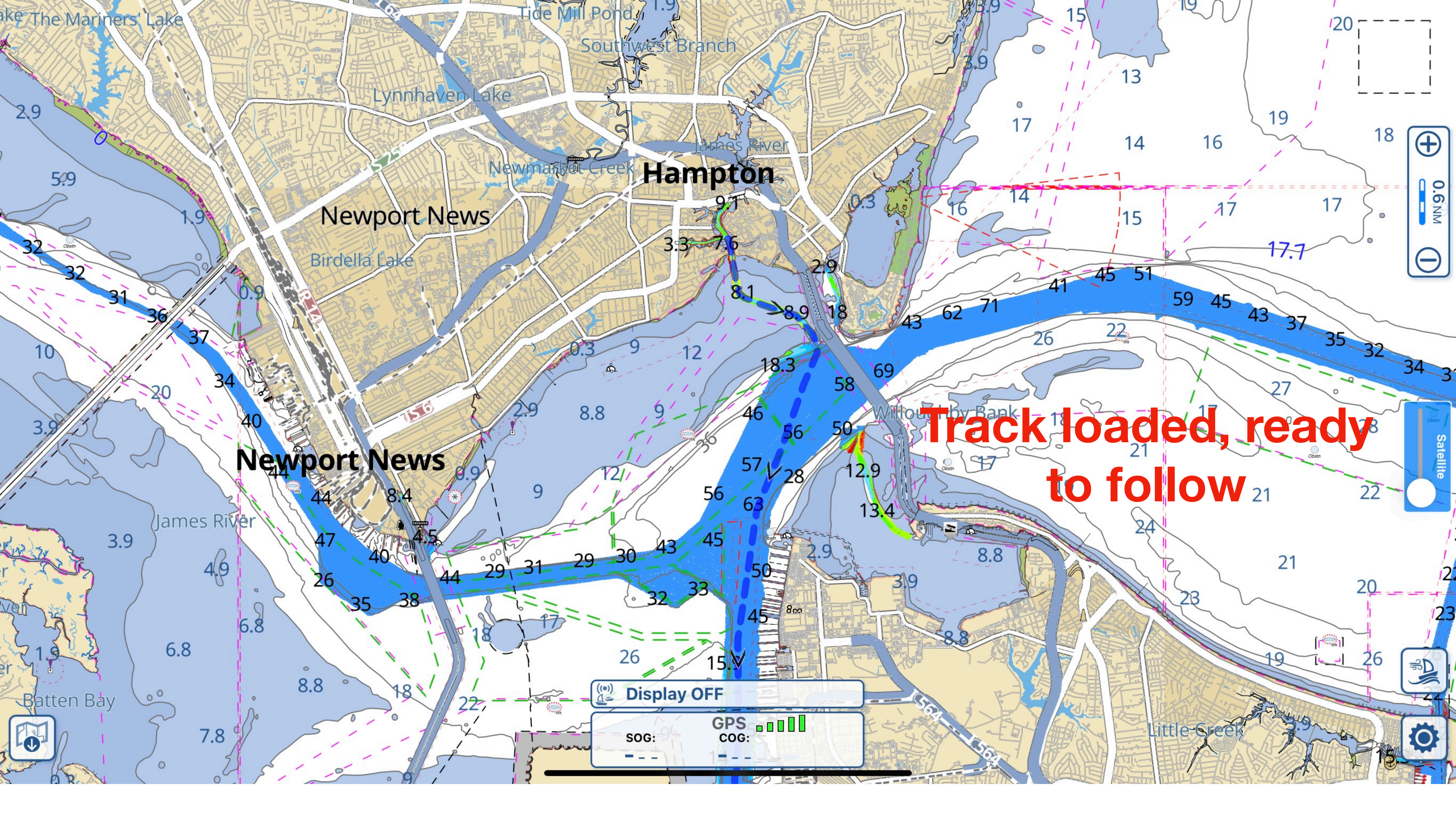


Tap on "Import"

Found: 1 Track.  
Do you want to import them  
in your archive?

Cancel Import





Hampton

Newport News

Newport News

Track loaded, ready to follow

Display OFF

SOG: --- GPS COG: |||||

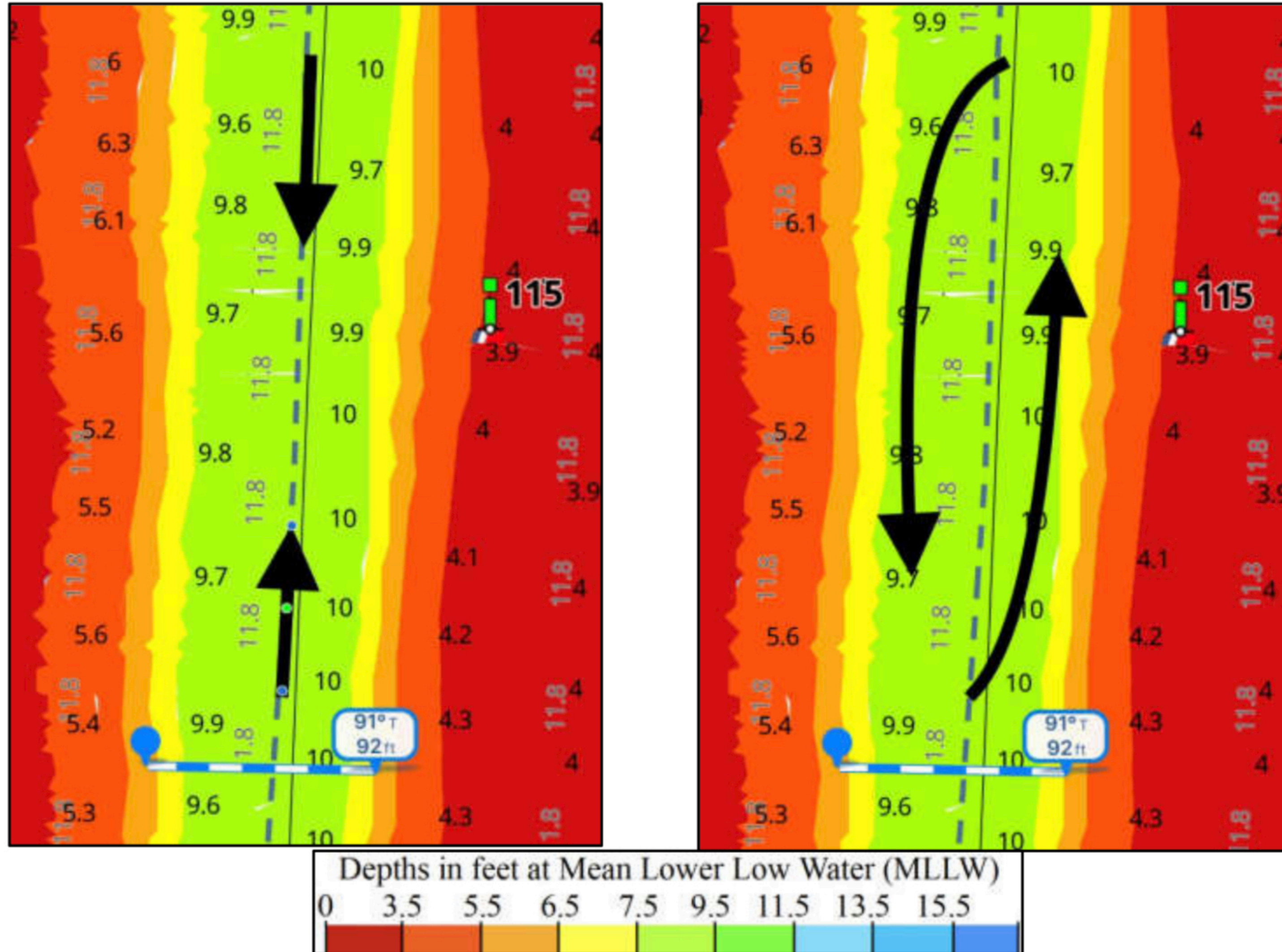
**NOTE: I have not yet achieved infallibility (*although it is one of my goals...*)**

**The tracks are as good as I can make them but the ICW is always changing due to shoaling, dredging, barges pushing mud around (into channels), high winds pushing water out, and a number of other factors.**

**As always, the captain takes full and sole responsibility for his vessel in using these files.**

**Always use the latest Bob423 track for a day's run.**

**Important: both boats are to alter course to starboard as far as is safe and practicable, per the Coast Guard Navigation Rules, and pass each other port to port.**

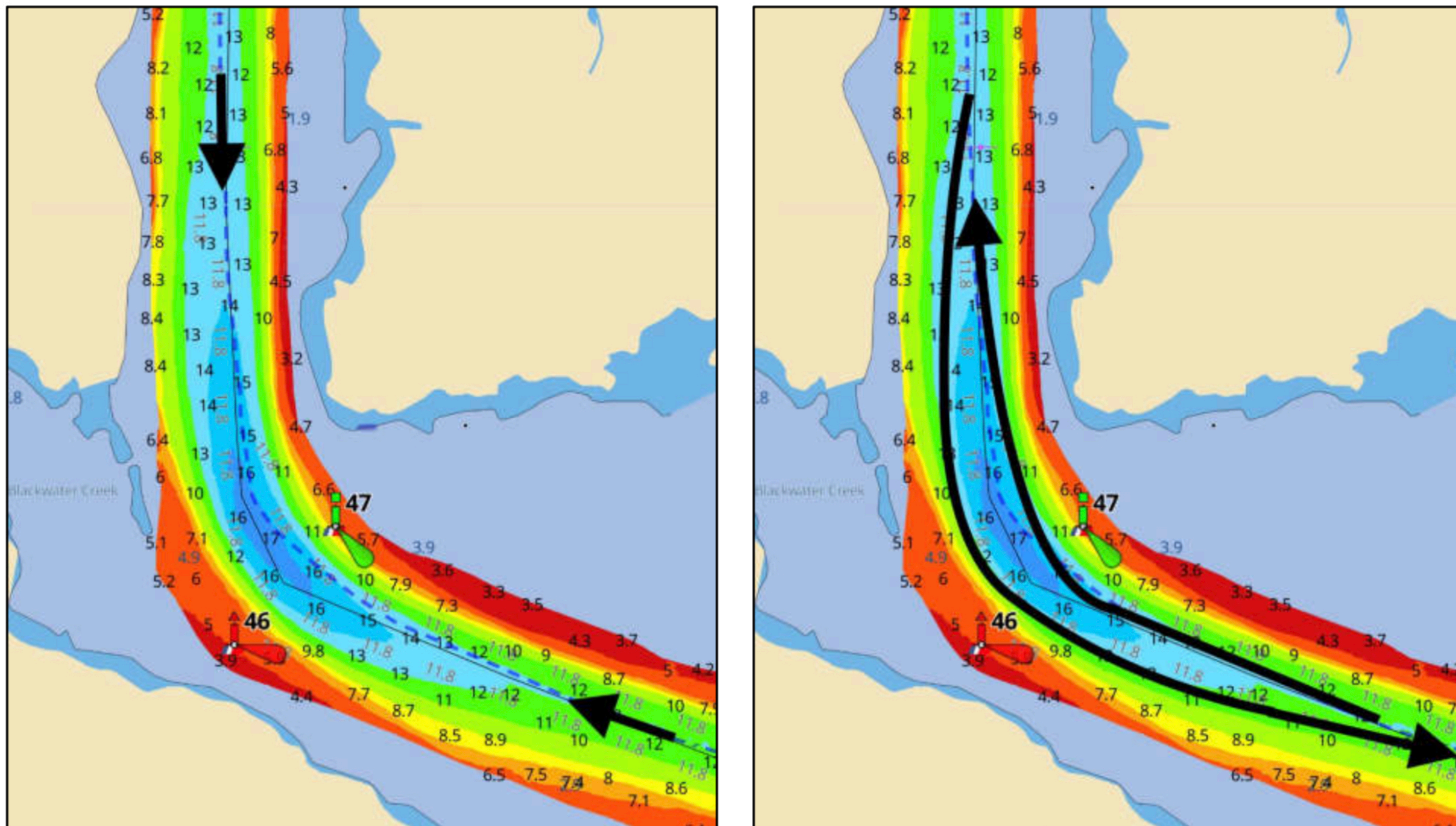


With the USACE survey displayed in Aqua Map, you can see how far it's safe for you to alter course to starboard. For a depth of 7.5 MLLW, the relatively narrow channel here is still 92 feet wide. Even with a 20 ft beam for each boat, that allows a passing distance of 70 feet.

Even in the notoriously narrow section known as the "Rock Pile" at MM 351.5 at Myrtle Beach in South Carolina, there is still a 90-foot wide channel. It's enough for two boats to pass safely.

Whether you're following the Magenta Line, a Bob423 track, or any other track or route – follow the rules of the road for passing in head-on situations.

Let's look at an example taken from another area north of Coinjock, Virginia at MM 30.3.



# Bob423 ICW Tracks and Routes

Tracks start with a "T" and have a time stamp. Routes start with a "B". Look at Tracks Descriptions for locations

[Home](#)[2021 ICW Cruising Guide Links](#)[How to Download Tracks and Routes](#)[Waterway Guide Alerts \(hazards\) List](#)[GPX Routes](#)[How to Record and Share Tracks](#)[Bob423 Long Tracks](#)[Track Splitter](#)[Videos](#)[Wine](#)[Burgees](#)[Spiral Bound Guide](#)

## Track Splitter



Garmin chartplotters typically have a maximum trackpoint count of 5000. Garmin advertises up to a 50,000 trackpoint storage but that applies only to the active track, not imported tracks that have the 5000 point limit. Here's a program for use to easily split tracks that seem to work well with B423 Long Tracks in getting under the 5000 trackpoint limit. You do not need to use this program for loading Long Tracks into Aqua Map or Navionics apps, only for loading into Garmin chartplotters. Once the split tracks are un-zipped, they can be loaded to the Garmin Active Captain app too, and transferred to a chartplotter via the WiFi interface on chartplotters with that feature.

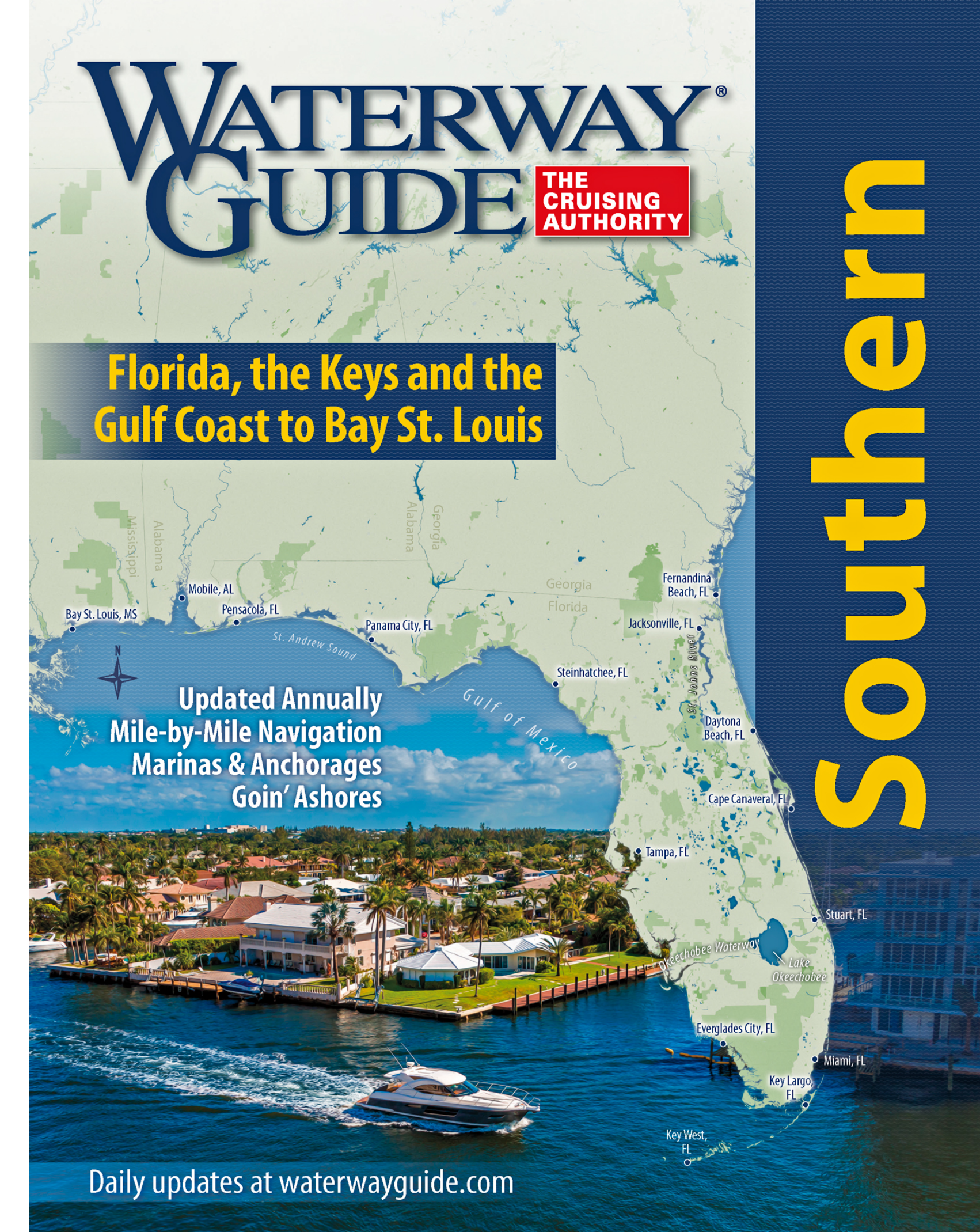
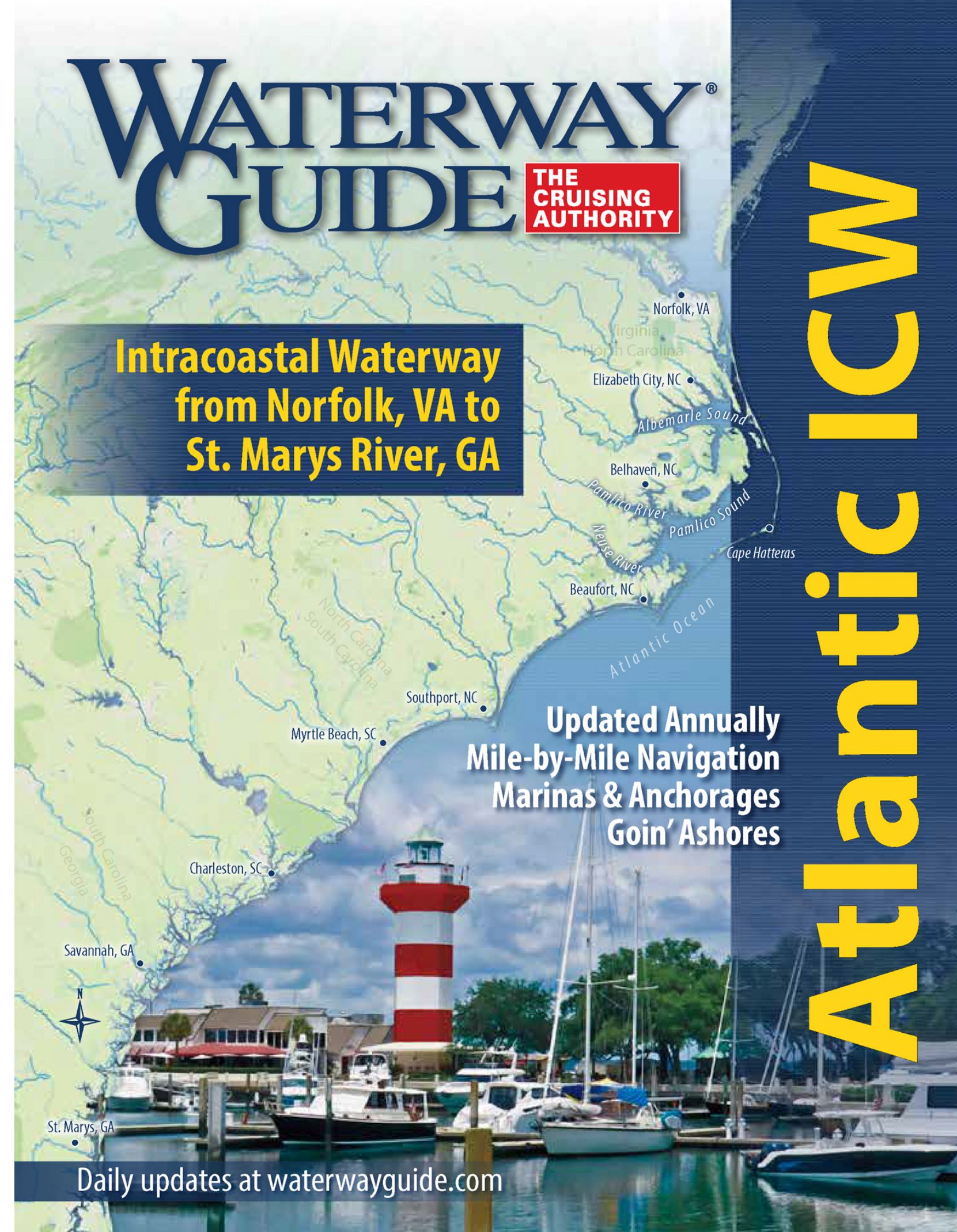
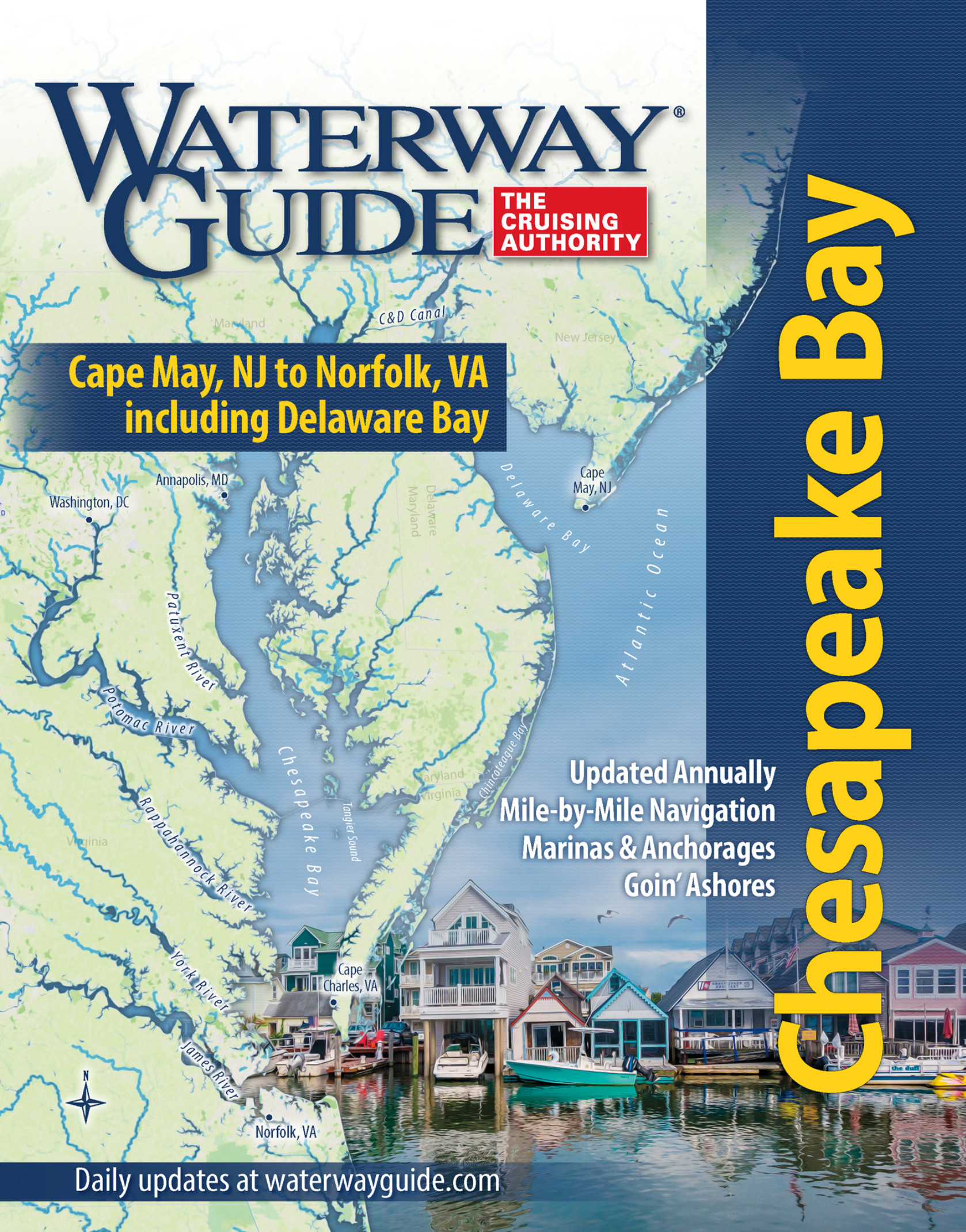
I spent the morning looking at ways to split long tracks into smaller segments that will load into Garmin Chartplotters. I've settled on the one at this site.

<https://simple-gpx.herokuapp.com/>

- **Aqua Map and Navionics will load all tracks but some chartplotters (notably Garmin) place limits on size of imported tracks.**
- **I provided a link to an app that will split a long track into smaller segments digestible by Garmin.**



- **If this boat can navigate the ICW, then you certainly can!**
- **However, if you happen to find yourself near low tide and approaching a shallow spot, the Bob423 track can help.**



- Waterway Guide books cover all the marinas and with more detail
- The WG books are also available as digital downloads to the WG app for Apple devices at <https://www.waterwayguide.com/mobile-app>



A sunset scene over a body of water. The sun is low on the horizon, creating a bright orange and yellow glow that reflects on the water. A large sailboat is silhouetted on the right side, and a smaller boat is visible on the left. The sky is filled with soft, wispy clouds.

**Dream, Plan, Do!**

**2022 ICW Cruising Guide**

**by Bob423**

**Available on Amazon.com**